

NOXON DECANTER CENTRIFUGES - CATALOGUE



CONTENT

DC3EL	2-3
DC6EL	4-5
DC10EL	6-7
DC12EL	8-9
DC20EL	10-11
DC30ELRV	12-13
DC40FC	14-16
LPS	17

We reserve the right to make any technical changes without prior notice.

WELCOME TO THE WORLD OF NOXON!

The purpose of this catalogue is to present basic technical data about Noxon centrifuges. The data can be used when dimensioning or upgrading a dewatering system. Please be aware that the capacity of the equipment as mentioned herein will vary depending on the characteristics of the sludge.

Noxon also supplies complete control cabinets with PLC control for the complete dewatering system as well as surrounding equipment such as polymer machines, pumps and conveyors.

Please contact us if you have any questions!

E-MAIL info@noxon.com / SWITCHBOARD +46 (0)300 55 440



Volume capacity (The rating varies owing to the sludge type.)	1-4 m ³ /h
Max dry solid/hour	120 kg
Drum diameter	391 mm
Rotor length	1144 mm
Cylindrical rotor length	500 mm
Max clarification area	0.78 m ²
Max hydraulic volume	67 lit
Max g-force	1965 m/s ²
Max g-force, HS version	2674 m/s ²
Max rotation	3000 rpm
Max rotation, HS version	3500 rpm
Sound level (1 m from machine in open air.)	82 dBA
Material, centrifuge	Standard: Carbon steel, epoxy painted Option: Stainless steel
Material, fastening elements	Stainless steel
Wear protection, screw	Wolfram carbide
Lubrication bearings	Grease

The centrifuge is tested in our workshop before delivery. A test certificate is filled in, which also includes details of vibration and sound level.

DRIVING MOTOR DRUM

Power	15 kW
Protect form	IP55
Energy class	IE2

DYNAMIC BREAK SCREW

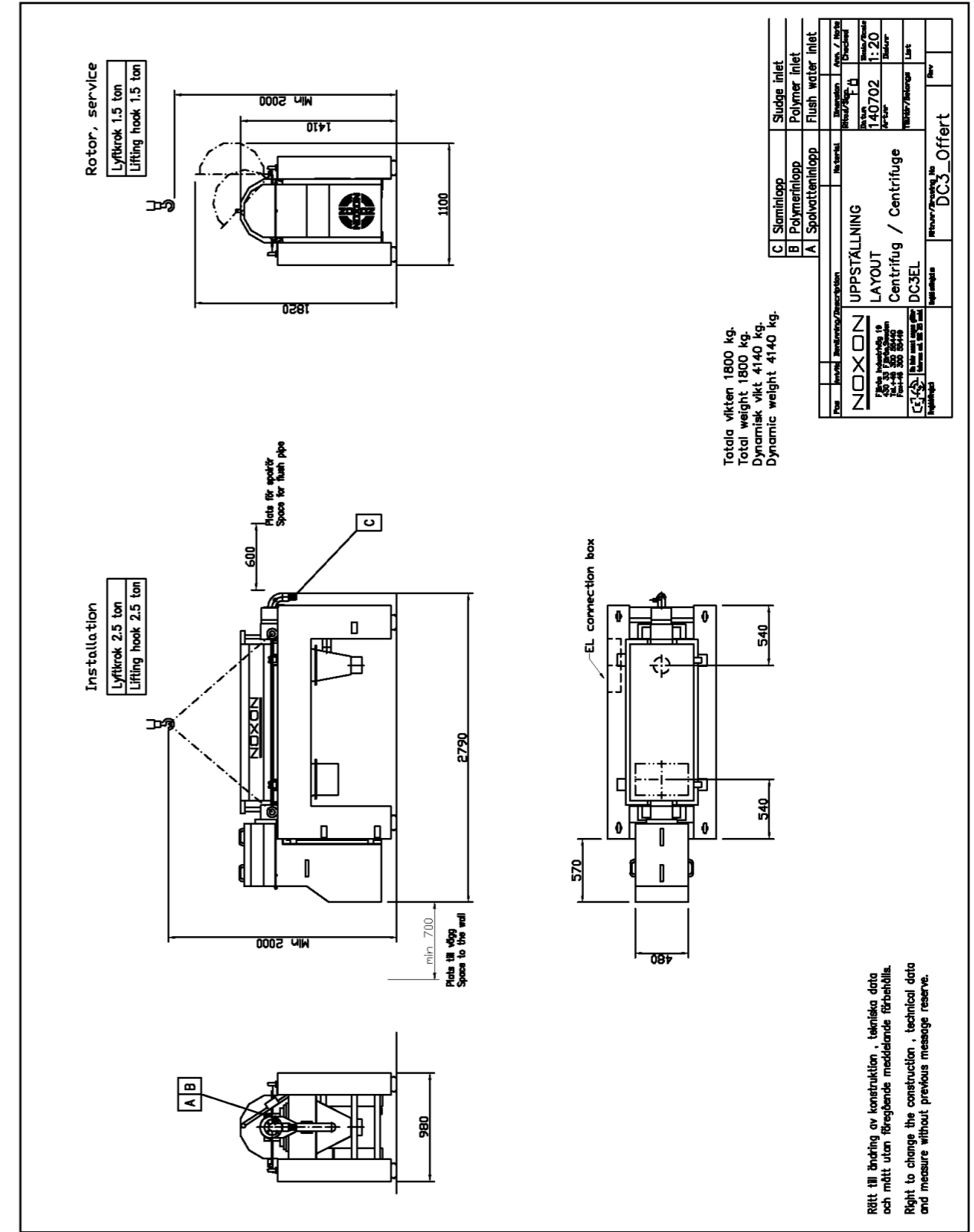
Power	7.5 kW
Protect form	IP55
Energy class	IE2

FREQUENCY REGULATED DRUM/FREQUENCY CONVERTER

Power	11 kW
Protection class	IP55

FREQUENCY REGULATED SCREW/FREQUENCY CONVERTER

Power	11 kW
Protection class	IP55



RETT TILL ÄNDRING AV KONSTRUKTION, TEKNISKA DATA OCH MÄTT UTMÅN FÖR GÄLLANDE MEDDELANDE FÖRBÄHÅLLS.
Right to change the construction, technical data and measure without previous message reserve.

This drawing is the property of Noxon protected in accordance with prevailing law.

Volume capacity (The rating varies owing to the sludge type.)	3-8 m ³ /h
Max dry solid/hour	250 kg
Drum diameter	391 mm
Rotor length	1644 mm
Cylindrical rotor length	1000 mm
Max clarification area	1.24 m ²
Max hydraulic volume	110 lit
Max g-force	1712 m/s ²
Max g-force, HS version	1965 m/s ²
Max rotation	2800 rpm
Max rotation, HS version	3000 rpm
Sound level (1 m from machine in open air.)	82 dBA
Material, centrifuge	Standard: Carbon steel, epoxy painted Option: Stainless steel
Material, fasthening elements	Stainless steel
Wear protection, screw	Thermal sprayed wolfram carbide
Lubrication bearings	Grease

The centrifuge is tested in our workshop before delivery. A test certificate is filled in, which also includes details of vibration and sound level.

DRIVING MOTOR DRUM

Power	22 kW
Protect form	IP55
Energy class	IE2

DYNAMIC BREAK SCREW

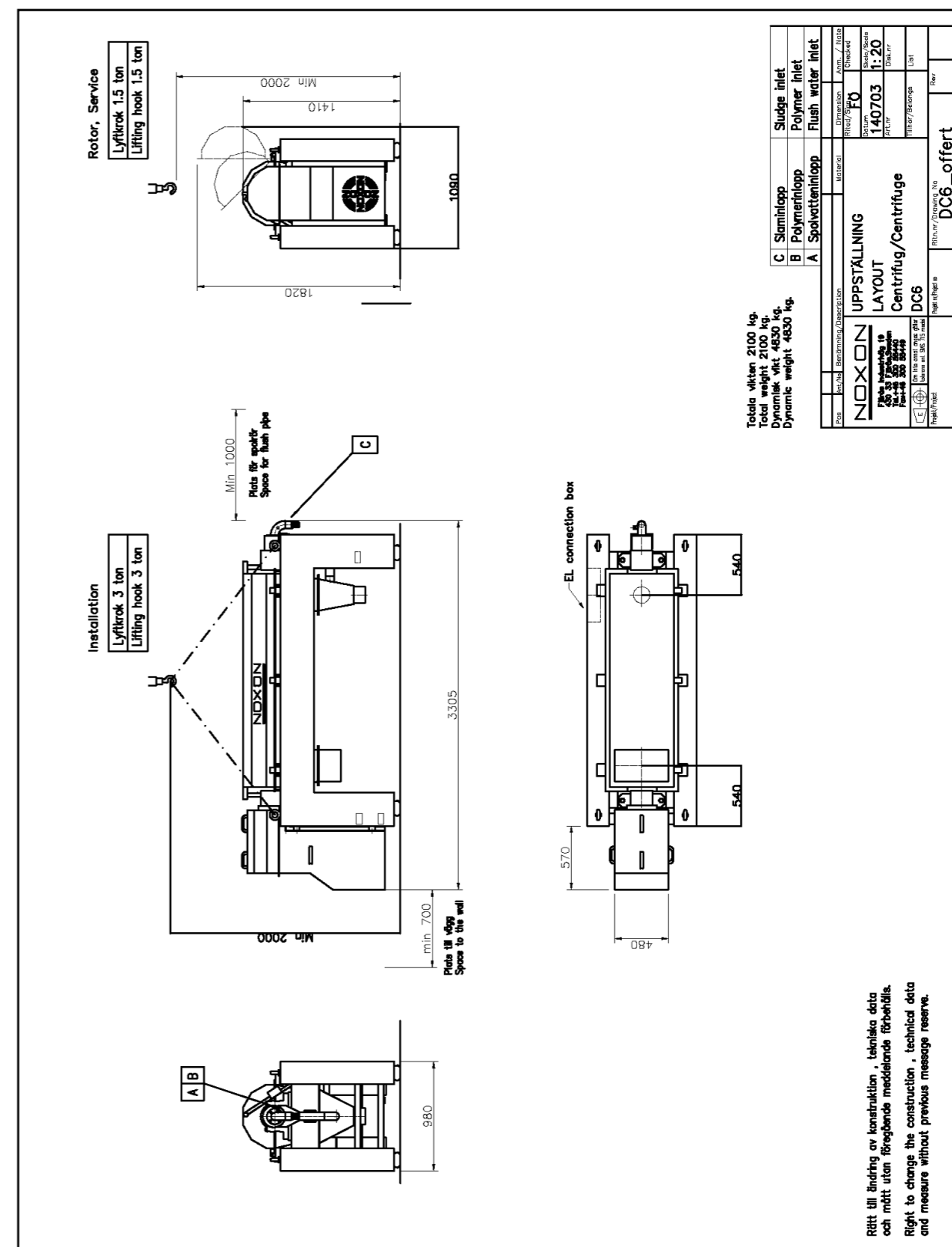
Power	7.5 kW
Protect form	IP55
Energy class	IE2

FREQUENCY REGULATED DRUM/FREQUENCY CONVERTER

Power	22 kW
Protection class	IP55

FREQUENCY REGULATED SCREW/FREQUENCY CONVERTER

Power	11 kW
Protection class	IP55



This drawing is the property of Noxon protected in accordance with prevailing law.

Volume capacity (The rating varies owing to the sludge type.)	5-15 m ³ /h
Max dry solid/hour	500 kg
Drum diameter	531 mm
Rotor length	1597 mm
Cylindrical rotor length	955 mm
Max clarification area	1.44 m ²
Max hydraulic volume	200 lit
Max g-force	1435 m/s ²
Max g-force, HS version	2324 m/s ²
Max rotation	2200 rpm
Max rotation, HS version	2800 rpm
Sound level (1 m from machine in open air.)	82 dBA
Material, centrifuge	Standard: Carbon steel, epoxy painted Option: Stainless steel materials
Material, fasthening elements	Stainless steel
Wear protection, screw	Thermal sprayed wolfram carbide
Lubrication bearings	Grease

The centrifuge is tested in our workshop before delivery. A test certificate is filled in, which also includes details of vibration and sound level.

DRIVING MOTOR DRUM

Power	30 kW
Protect form	IP55
Energy class	IE2

DYNAMIC BREAK SCREW

Power	11 kW
Protect form	IP55
Energy class	IE2

FREQUENCY REGULATED DRUM/FREQUENCY CONVERTER

Power	30 kW
Protection class	IP55

FREQUENCY REGULATED SCREW/FREQUENCY CONVERTER

Power	11 kW
Protection class	IP55

Rotar Service
Lifting hook 2ton

Installation
Lifting hook 3,3ton

EL connection box

MIN. 800
Plats för spolår
Space for flush pipe

MIN. 700
Plats till vägg
Space to the wall

2052
1592
1311
min. 2000

3209
1120
2039
540
676

Pos	Var./Ant.	Beskrivning/Description	Dimension	Material	Övrigt
		KeArd			
		110113			
		DC10EL			
		DC10EL-Offert G			

Table

Pos	Description	Connection
A	Sludge inlet	Flögs nippel 800 outside
B	Polymer inlet	Nippel 3/4"
C	Flushwater inlet	Nippel 3/4"

Totala vikten 2600kg.
Total weight 2600kg.
Dynamisk vikt 5980kg.
Dynamic weight 5980kg.

NOXON
UPPSTÄLLNING
LAYOUT
Centrifug / Centrifuge
DC10EL

Plats för vägg
Space to the wall
MIN. 800
MIN. 700

Rätt till ändring av konstruktion, tekniska data och mått utan föregående meddelande förbehålls.
Right to change the construction - technical data and measure without previous message reserve.

This drawing is the property of Noxon protected in accordance with prevailing law.

Volume capacity (The rating varies owing to the sludge type.)	6-18 m ³ /h
Max dry solid/hour	600 kg
Drum diameter	460 mm
Rotor length	2000 mm
Cylindrical rotor length	1390 mm
Max clarification area	1.58 m ²
Max hydraulic volume	221 lit
Max g-force	1605 m/s ²
Max g-force, HS version	2312 m/s ²
Max rotation	2500 rpm
Max rotation, HS version	3000 rpm
Sound level (1 m from machine in open air.)	82 dBA
Material, centrifuge	Standard: Carbon steel, epoxy painted Option: Stainless steel
Material, fasthening elements	Stainless steel
Wear protection, screw	Wolfram carbide
Lubrication bearings	Grease

The centrifuge is tested in our workshop before delivery. A test certificate is filled in, which also includes details of vibration and sound level.

DRIVING MOTOR DRUM

Power	30 kW
Protect form	IP55
Energy class	IE2

DYNAMIC BREAK SCREW

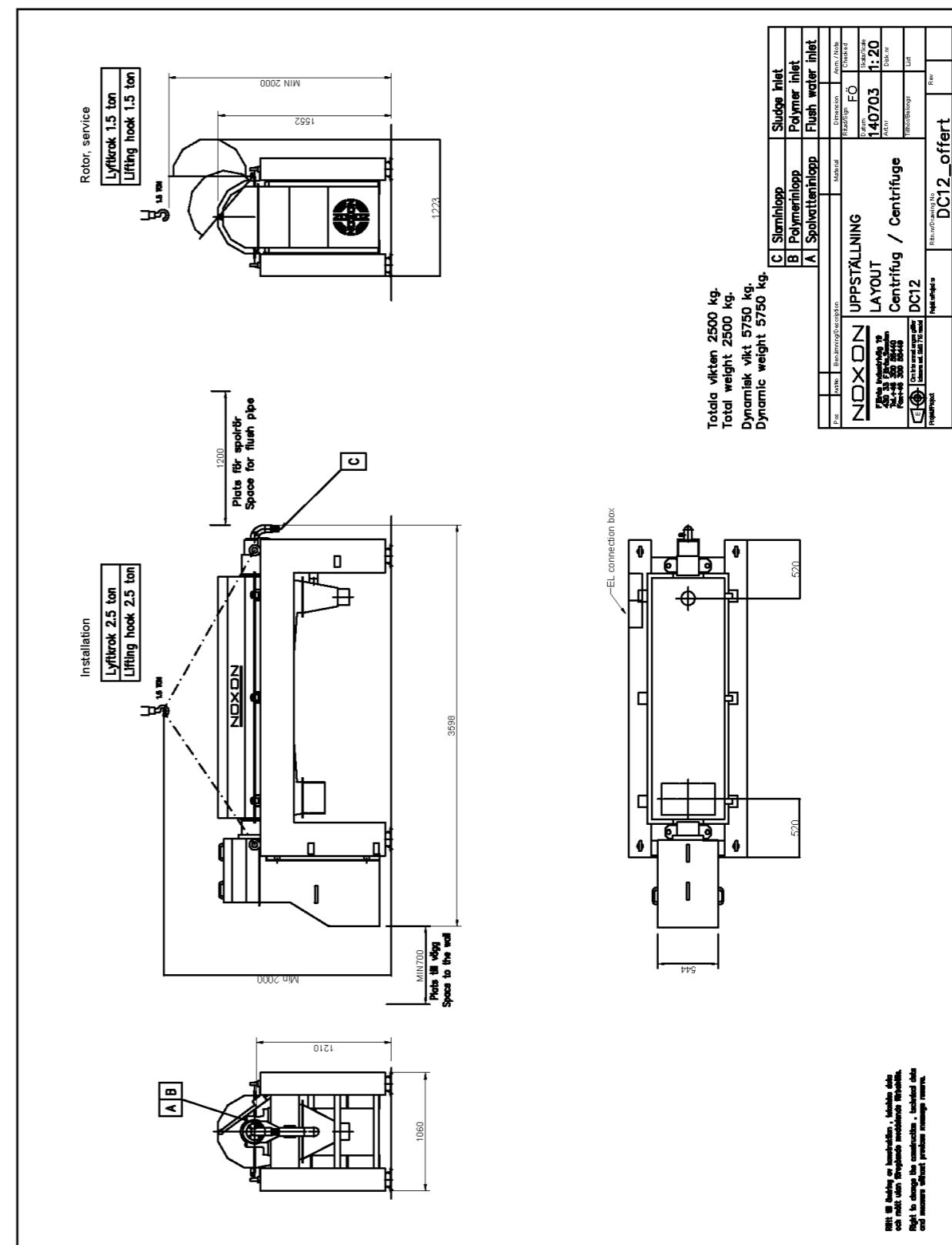
Power	7.5 kW
Protect form	IP55
Energy class	IE2

FREQUENCY REGULATED DRUM/FREQUENCY CONVERTER

Power	30 kW
Protection class	IP55

FREQUENCY REGULATED SCREW/FREQUENCY CONVERTER

Power	11 kW
Protection class	IP55



Volume capacity (The rating varies owing to the sludge type.)	8-25 m ³ /h
Drum diameter	531 mm
Rotor length	2298 mm
Cylindrical rotor length	1656 mm
Max clarification area	2.2 m ²
Max hydraulic volume	317 lit
Max g-force	1435 m/s ²
Max g-force, HS version	2004 m/s ²
Max rotation	2200 rpm
Max rotation, HS version	2600 rpm
Sound level (1 m from machine in open air.)	82 dBA
Material, centrifuge	Standard: Carbon steel, epoxy painted Option: Stainless steel materials
Material, fasthening elements	Stainless steel
Wear protection, screw	Thermal sprayed wolfram carbide
Lubrication bearings	Grease

The centrifuge is tested in our workshop before delivery. A test certificate is filled in, which also includes details of vibration and sound level.

DRIVING MOTOR DRUM

Power	30 kW
Power, AP version	37 kW
Protect form	IP55
Energy class	IE2

DYNAMIC BREAK SCREW

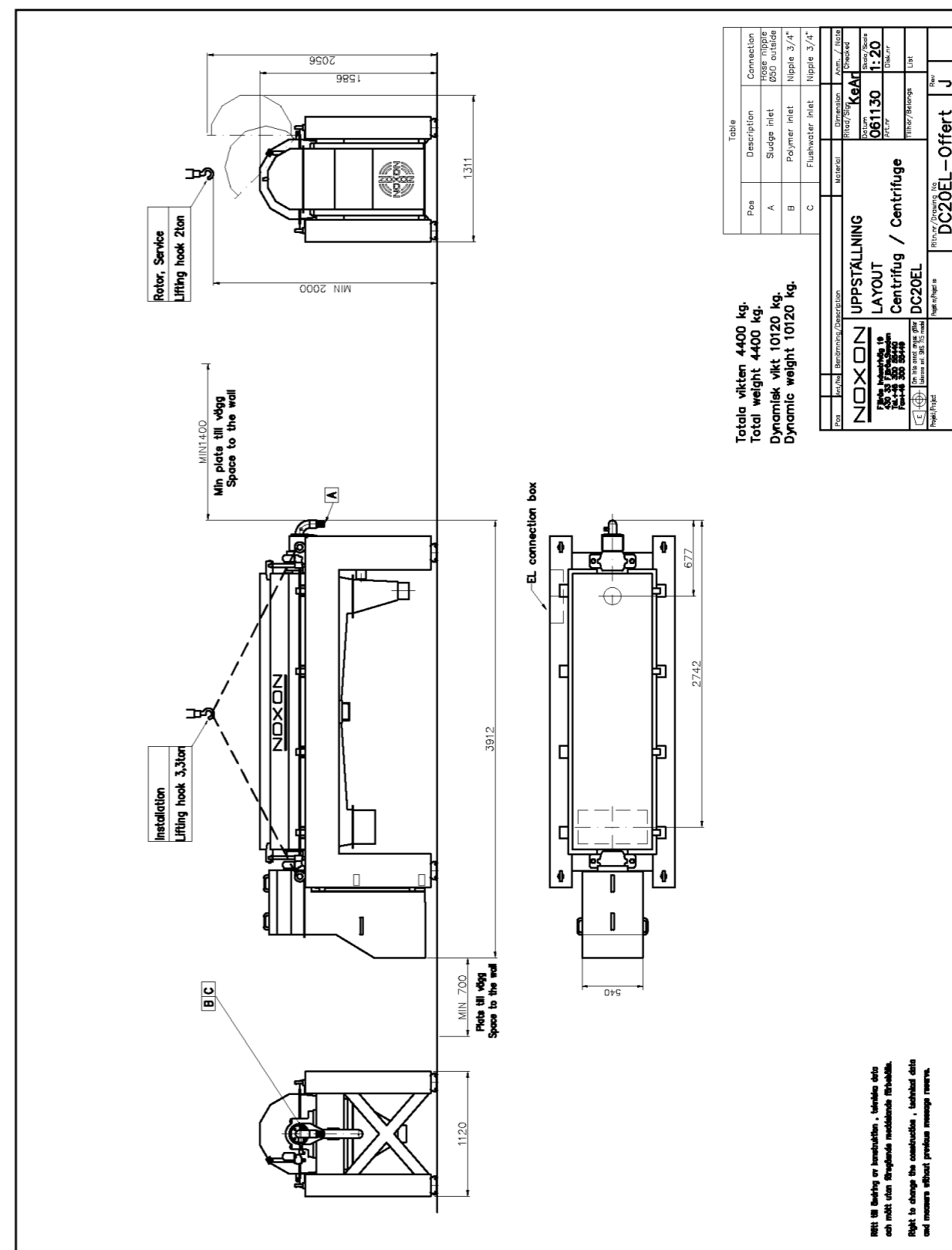
Power	7.5 kW
Protect form	IP55
Energy class	IE2

FREQUENCY REGULATED DRUM/FREQUENCY CONVERTER

Power	37 kW
Protection class	IP55

FREQUENCY REGULATED SCREW/FREQUENCY CONVERTER

Power	11 kW
Protection class	IP55



This drawing is the property of Noxon protected in accordance with prevailing law.

Volume capacity (The rating varies owing to the sludge type.)	8-35 m ³ /h
Max dry solid/hour	1000 kg
Drum diameter	531mm
Rotor length	2298 mm
Cylindrical rotor length	1656 mm
Max clarification area	2.2 m ²
Max hydraulic volume	317 lit
Max g-force	1435 m/s ²
Max g-force, HS version	2004 m/s ²
Max rotation	2200 rpm
Max rotation, HS version	2600 rpm
Sound level (1 m from machine in open air.)	82 dBA
Material, centrifuge	Standard: Carbon steel, epoxy painted Option: Stainless steel
Material, fasthening elements	Stainless steel
Wear protection, screw	Wolfram carbide
Lubrication bearings	Grease

The centrifuge is tested in our workshop before delivery. A test certificate is filled in, which also includes details of vibration and sound level.

DRIVING MOTOR DRUM

Power	45 kW
Protect form	IP55
Energy class	IE2

DYNAMIC BREAK SCREW

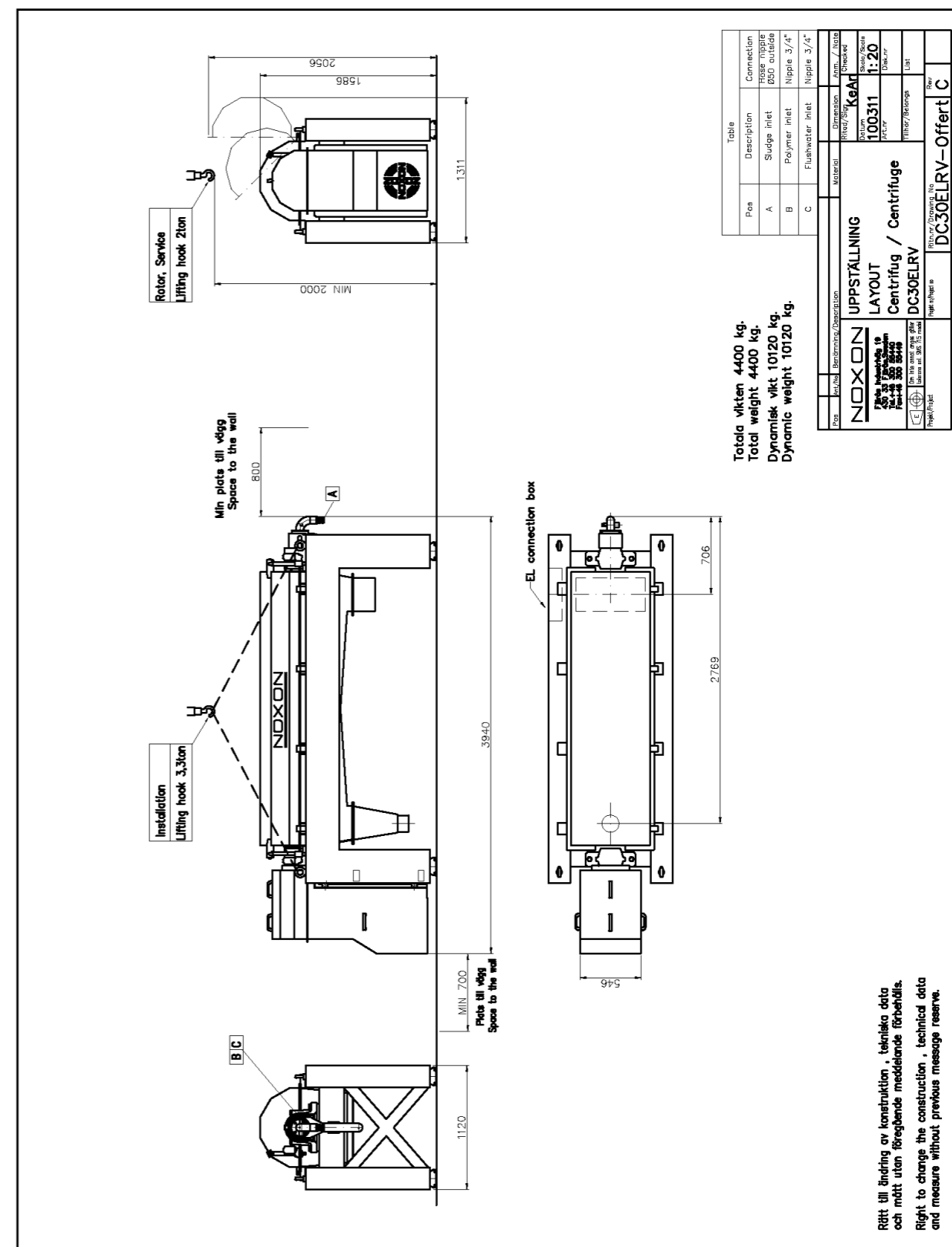
Power	11 kW
Protect form	IP55
Energy class	IE2

FREQUENCY REGULATED DRUM/FREQUENCY CONVERTER

Power	45 kW
Protection class	IP55

FREQUENCY REGULATED SCREW/FREQUENCY CONVERTER

Power	11 kW
Protection class	IP55



This drawing is the property of Noxon protected in accordance with prevailing law.

DC40FC

Volume capacity (The rating varies owing to the sludge type.)	25-50 m ³ /h
Max dry solid/hour	1600 kg
Drum diameter	800 mm
Rotor length	2446 mm
Cylindrical rotor length	1180 mm
Max clarification area	3.26 m ²
Max hydraulic volume	615 lit
Max g-force	2162 m/s ²
Max rotation	2200 rpm
Sound level (1 m from machine in open air.)	80 dBA
Material, centrifuge	STANDARD: Carbon steel, epoxy painted OPTION: Stainless steel
Material, fastening elements	Stainless steel
Wear protection, screw	Wolfram carbide
Lubrication bearings	Grease/oil

The centrifuge is tested in our workshop before delivery. A test certificate is filled in, which also includes details of vibration and sound level.

DRIVING MOTOR DRUM

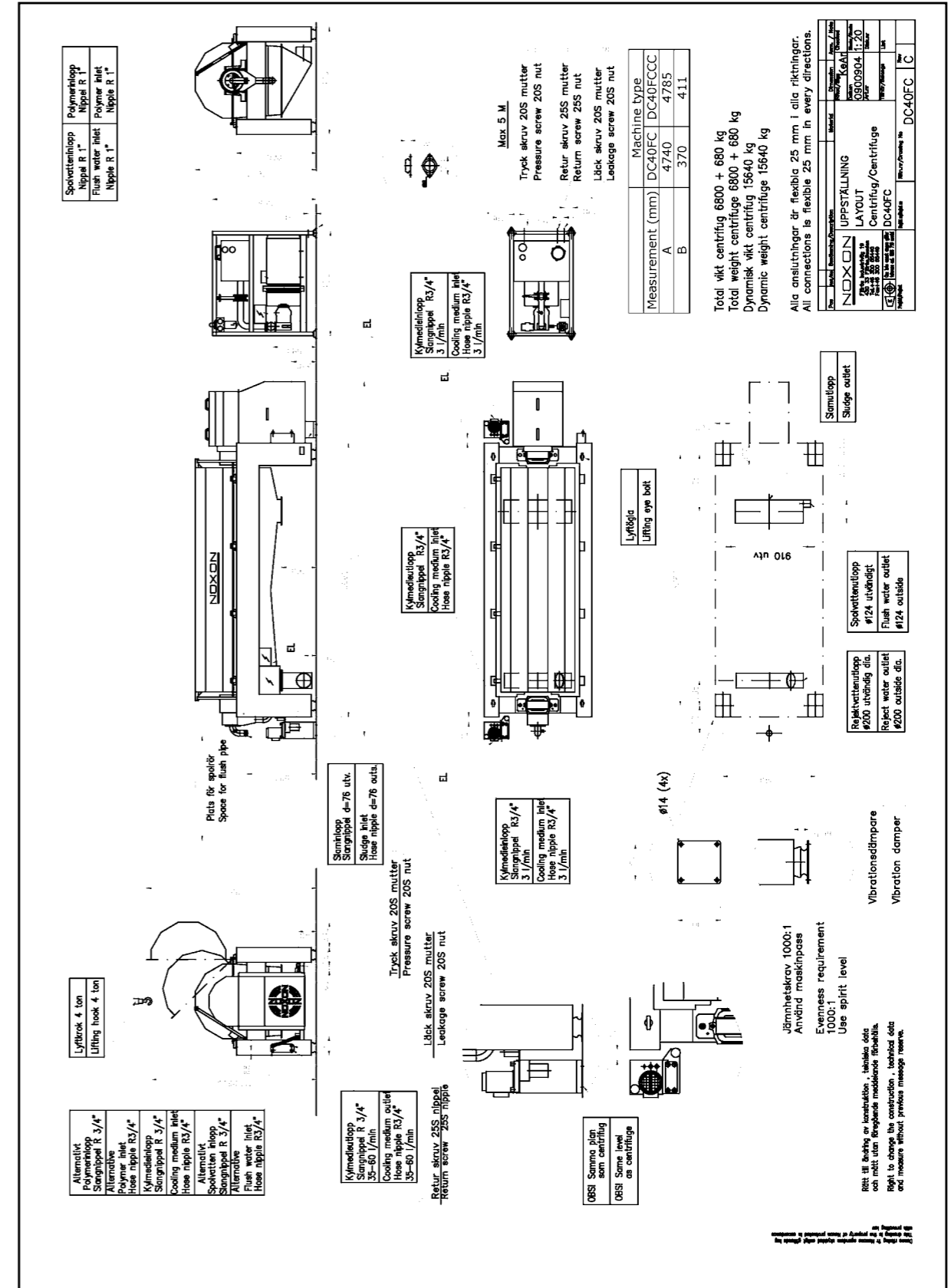
Power	55 kW
Protect form	IP55
Energy class	IE2

DYNAMIC BREAK SCREW

Power	30 kW
Protect form	IP55
Energy class	IE2

FREQUENCY REGULATED DRUM/FREQUENCY CONVERTER

Power	55 kW
Protection class	IP55



This drawing is the property of Noxon protected in accordance with prevailing law.

HYDRAULIC EQUIPMENT SCREW**Hydraulic pump**

Manufacturer	Metaris
Type	Axial piston pump
Displacement	Variable

Hydraulic motor

Manufacturer	Hägglunds
--------------	-----------

Hydraulic oil

Type	Statoil LubeWay XA150
------	-----------------------

OTHER EQUIPMENT IN THE HYDRAULIC SYSTEM

Volume hydraulic tank	130 litres
Air filter	Hydac
Level-temperatur switch	Hemomatik
Oil cooler	Hydac
Proportional valve	Sun hydraulics
Return filter	MP Filtri
Oil pressure filter	Hydac
Material, hydraulic pipes	Steel, galvanized
Type, hydraulic fittings	Ring fittings
Type, hydraulic hoses	High-pressure hoses

The cooling for the hydraulic system is done with polymer solution alternative fresh water.

SENSORS

Pressure gauge / Temperature-level switch, hydraulic tank / Revolutions, screw / Revolutions, drum / Inductive sensors, sludge shutter (optional) / Vibration sensor, main bearing / Temperature sensor, main bearing

LUBRICATION SYSTEM FOR BEARING

Volume, hydraulic tank	2x50 litres
Type, hydraulic oil	Mereta 32
Oil pump	Marzochi
Electrical motor	ABB/M3AA
Power	0.37 kW
Air filter	Hydac
Oil filter	Hydac

LP5

Volume capacity (The rating varies owing to the sludge type.)	4-6 m ³ /h
Max dry solid/hour	150 kg
Drum diameter	391 mm
Rotor length	1144 mm
Cylindrical rotor length	757 mm
Max clarification area	0.83 m ²
Max hydraulic volume	80 lit
Max g-force	1965 m/s ²
Max rotation	3000 rpm
Sound level (1 m from machine in open air.)	82 dBA
Material, centrifuge	Carbon steel, epoxy painted
Material, fasthening elements	Stainless steel
Wear protection, screw	Wolfram carbide
Guarantee screw	8000 hrs or 2 years, which occurs first
Lubrication bearings	Grease/oil

The centrifuge is tested in our workshop before delivery. A test certificate is filled in, which also includes details of vibration and sound level.

DRIVING MOTOR DRUM

Power	11 kW
Protect form	IP55

FREQUENCY REGULATED DRUM/ FREQUENCY CONVERTER

Power	45 kW
Protection class	IP55

For layout drawing of LP5 decanter please contact Noxon.

NOXON AB

Fjärås Industriväg 19
Box 53
SE-439 03 Fjärås, Sweden
www.noxon.se
info@noxon.se
+46 (0)300 55 440

